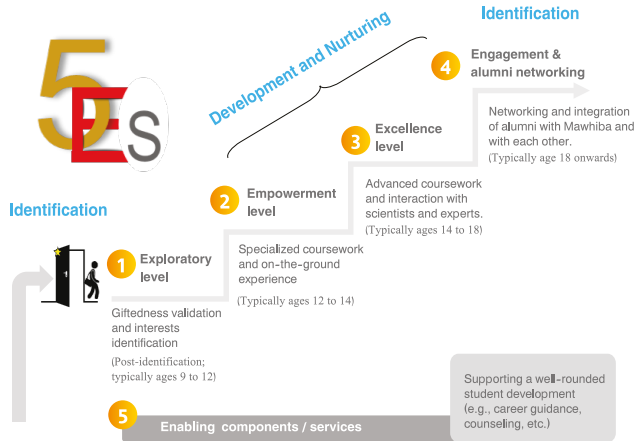


## 5E's Gifted Student Journey



## Mawhiba Publications

For reading scientific resources in the field of identifying and nurturing gifted students that have been translated to Arabic by Mawhiba.



Scan QR Code

## Nominate a Gifted Person

Invest in yourself or in your children or in your students by joining Mawhiba programs.



Scan QR Code

## Become a Partner

The gifted are central to the development process and they are the makers of startups and excellence. To become a partner in building giftedness and creativity in the world through nurturing and supporting the gifted and their programs.



Scan QR Code

## Mawhiba Alumni

A university student or a graduate for the work market and has previously participated in Mawhiba programs? Join the network of your gifted colleagues across various sectors through Mawhiba Alumni.



Scan QR Code

## Become a Member

Interested in nurturing giftedness and creativity?

Join the Mawhiba Membership Program.



Scan QR Code

## Follow us on Social Media



920014025



info2@mawhiba.org.sa

mawhiba.org



Mawhiba



Scan QR Code



## National Foundation with Global Reach Foster Giftedness Since 1419 H



“Mawhiba...Where you belong”

“Mawhiba...Where you belong”



## Introduction

King Abdulaziz and his Companions Foundation for Giftedness and Creativity "Mawhiba", is a non-profit endowment foundation, that is interested in people speaking the language of giftedness and Creativity, prospecting world gifted treasures; identifying, nurturing and empowering them to fulfill their heart's and mind's passion with leading programs and initiatives, and paves the way for them to a world of creativity. "Mawhiba" is a national foundation with a global reach and ambition that embraces the sky which serves its nation vision and leadership ambition, not limited by geography, scattering seeds of giving all over the world.

## Values

- Passion**  
We are passionate about achieving our vision
- Collaboration**  
Altruism for Success
- Creativity**  
From imagination to innovation towards building a better future.
- Excellence**  
Build a better future
- Trust**  
Credibility and taking responsibility

## Vision

To enable giftedness and creativity as the main contributions to the advancement of humanity.

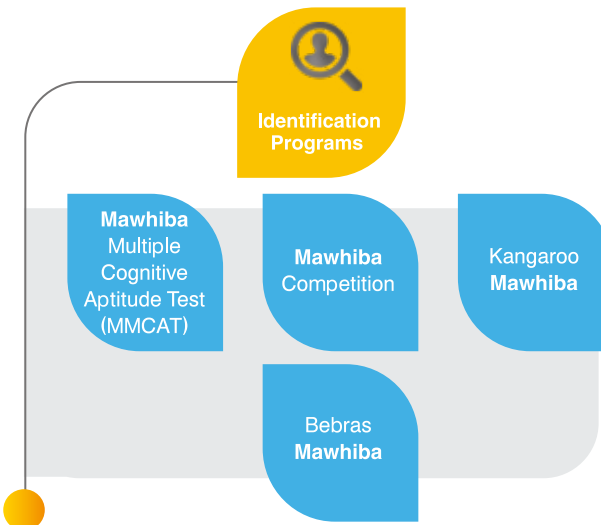
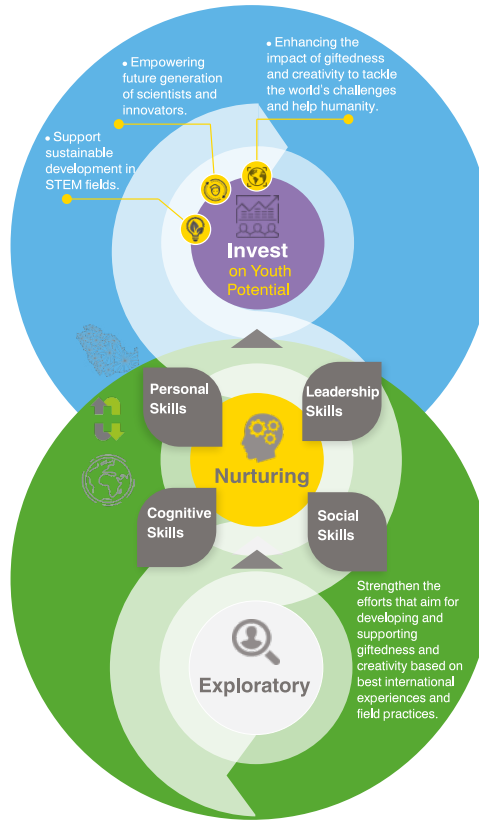
## Mission

To provide an inspirational environment for giftedness and creativity, and promote passion for science & knowledge in the development of future leaders.

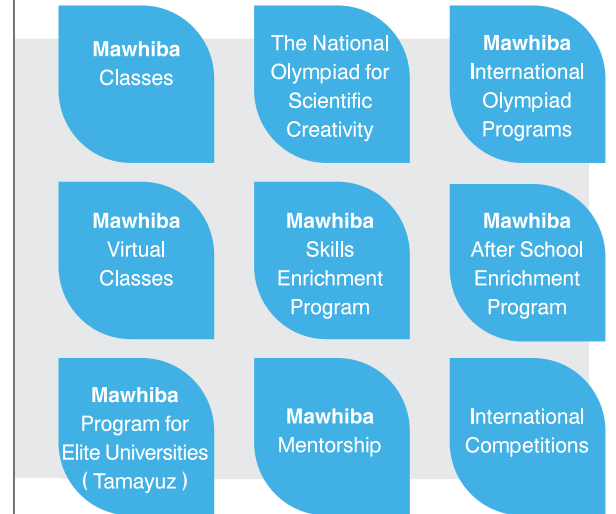
## Strategic Objectives

- 1<sup>st</sup> ▶ To demonstrate the potentials of gifted students.
- 2<sup>nd</sup> ▶ To develop an integrated framework for gifted students to be nurtured and connected in their journey.
- 3<sup>rd</sup> ▶ To catalyze the progress in gifted education.
- 4<sup>th</sup> ▶ To leverage collaboration with partners.
- 5<sup>th</sup> ▶ To reach beyond national boundaries.
- 6<sup>th</sup> ▶ To enhance the efficiency and effectiveness of the foundation.
- 7<sup>th</sup> ▶ To enhance the financial sustainability of the institution.
- 8<sup>th</sup> ▶ To build the foundation on a culture of social impact.

## Mawhiba Methodology



## Mawhiba Programs During Academic Year



## Mawhiba Summer Programs

